

Retrofit Saves First Presbyterian Church Approximately \$900 a Year in Lighting Costs

Situation

The First Presbyterian Church at 950 West State Street was looking to reduce energy and lighting costs while improving overall lighting aesthetics.

Challenge

When the church was originally built, inefficient (and costly) High-Pressure Sodium type light fixtures and incandescent bulbs were installed. The church contacted Enterprise Electric to determine what energy-efficient solutions were available, what kind of savings they would deliver and what impact they would have on the interior aesthetics.

Solution

Enterprise Electric, a leading electrical contractor serving industrial, commercial and residential customers in western Idaho and eastern Oregon, proposed a combination of T5 High Output fluorescent fixtures, high-efficiency LED lamps and compact fluorescent bulbs.

(continued on next page)



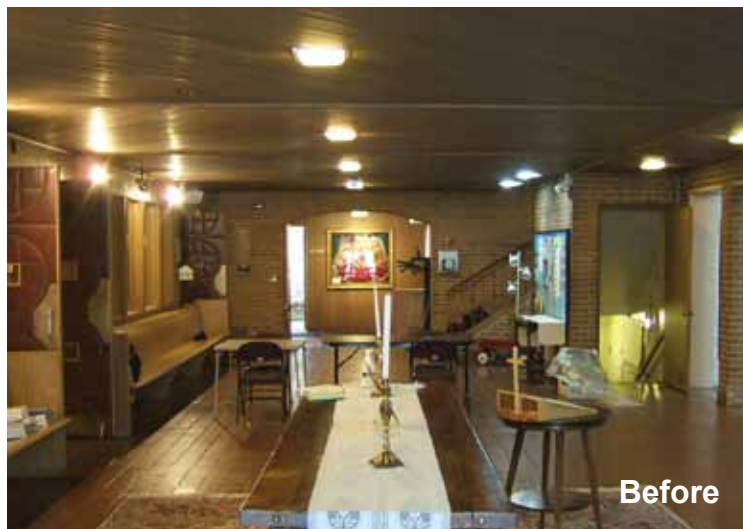
The old High-Pressure Sodium lighting (Before) had an unnatural yellowish cast and created lots of dark shadows. The new lighting (After) delivers a cleaner, natural look, while providing balanced illumination and fewer shadows.



Retrofit Saves First Presbyterian Church Approximately \$900 a Year in Lighting Costs

The final project included:

- Replace sixty-six (66) 65-watt, incandescent lamps with 14-watt LED lamps (high-efficiency LED lamps have life expectancy of 50,000 hours -- more than 50 times longer).
- Replace forty (40) 250-watt High-Pressure Sodium type light fixtures with T5 High Output florescent fixtures.
- Replace thirty one (31) 60-watt incandescent light fixtures with 40 compact florescent fixtures



The retrofit is projected to save the church about \$900 per year in lighting costs, while at the same time enhancing overall lighting quality. What's more, the project qualified for an \$1,849 rebate through the Idaho Power "Easy Upgrades" Incentive Program.

Email Bill Hines at bill@enterpriseelectricboise.com or phone 208-344-0441 to learn more.

